



**REGIONAL SPECIALISED METEOROLOGICAL CENTRE-TROPICAL CYCLONES, NEW DELHI
TROPICAL WEATHER OUTLOOK**

DEMS-RSMC TROPICAL CYCLONES NEW DELHI DATED 24.09.2021

TROPICAL WEATHER OUTLOOK FOR NORTH INDIAN OCEAN (THE BAY OF BENGAL OF BENGAL OF BENGAL AND ARABIAN SEA) VALID FOR NEXT 120 HOURS ISSUED AT 0600 UTC OF 24.09.2021 BASED ON 0300 UTC OF 24.09.2021.

BAY OF BENGAL:

UNDER THE INFLUENCE OF THE CYCLONIC CIRCULATION, A LOW PRESSURE AREA HAS FORMED OVER EASTCENTRAL BAY OF BENGAL & NEIGHBOURHOOD . IT IS LIKELY TO BECOME MORE MARKED AND MOVE WEST-NORTHWESTWARDS TOWARDS ODISHA COAST DURING THE SUBSEQUENT 48 HOURS.

LOW PRESSURE AREA LAY OVER EAST-CENTRAL BAY OF BENGAL & NEIGHBOURHOOD. ASSOCIATED BROKEN LOW AND MEDIUM CLOUDS WITH EMBEDDED INTENSE TO VERY INTENSE CONVECTION LAY OVER EAST-CENTRAL ADJOINING NORTHEAST BAY OF BENGAL, ARAKAN COAST & NEIGHBOURHOOD. MINIMUM CLOUD TOP TEMPERATURE IS -93°C.

SCATTERED TO BROKEN LOW AND MEDIUM CLOUDS WITH EMBEDDED INTENSE TO VERY INTENSE CONVECTION LAY OVER NORTHEAST ADJOINING CENTRAL BAY OF BENGAL, ARAKAN COAST. SCATTERED LOW AND MEDIUM CLOUDS WITH EMBEDDED MODERATE TO INTENSE CONVECTION LAY OVER SOUTHWEST BAY OF BENGAL OFF NORTH TAMILNADU COAST, SOUTHEAST BAY OF BENGAL & SOUTH ANDAMAN SEA.

PROBABILITY OF CYCLOGENESIS (FORMATION OF DEPRESSION) DURING NEXT 120 HRS:

24 HOURS	24-48 HOURS	48-72 HOURS	72-96 HOURS	96-120 HOURS
NIL	NIL	NIL	NIL	NIL

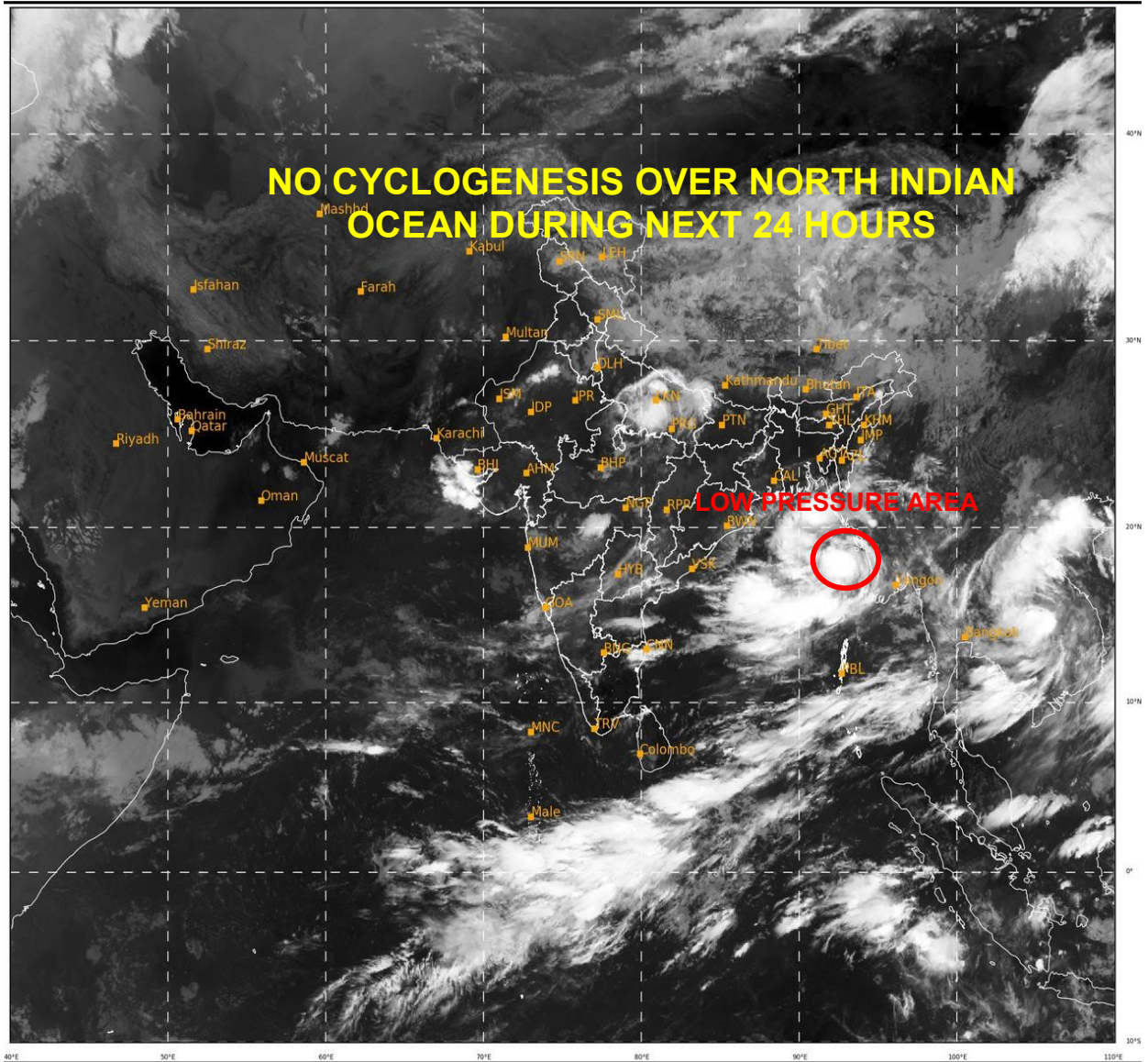
ARABIAN SEA:

SCATTERED LOW AND MEDIUM CLOUDS WITH EMBEDDED INTENSE TO VERY INTENSE CONVECTION LAY OVER NORTHEAST ARABIAN SEA OFF NORTH GUJARAT COAST, GULF OF KUTCH. SCATTERED LOW AND MEDIUM CLOUDS WITH EMBEDDED WEAK TO MODERATE CONVECTION LAY OVER EAST-CENTRAL ARABIAN SEA OFF SOUTH MAHARASHTRA-GOAKARNATAKA COASTS AND SOUTH-CENTRAL ARABIAN SEA.

PROBABILITY OF CYCLOGENESIS (FORMATION OF DEPRESSION) DURING NEXT 120 HRS:

24 HOURS	24-48 HOURS	48-72 HOURS	72-96 HOURS	96-120 HOURS
NIL	NIL	NIL	NIL	NIL

REMARKS: NIL



488

928

IMD, DELHI